

Updates for Bit Ones already finalized: Software and Firmware

To be used on Bit Ones (with Firmware V. 1.0.7.1 or older version installed) where settings have already been saved. Starting from Firmware V. 1.5.0.0 or higher version the update can be performed following the standard procedure (see the Bit One Advanced Manual)

Contents:

- PC Software update
- Bit One Firmware update

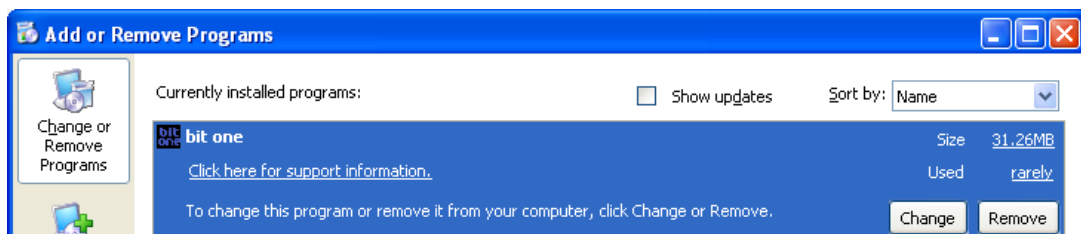
IMPORTANT REMARKS:

- 1) The different steps of this update must be performed strictly following the sequence hereafter, exactly as per the chronological order indicated in this document.
- 2) First you need to update the Bit One PC software, then proceed with updating the Bit One firmware.
- 3) These updates require good skills in general PC management.
- 4) The firmware update should be attentively performed, following the warnings listed in the Bit One firmware update section of this document, to avoid damaging the product.
- 5) All the previously stored settings will be lost once the software and firmware updates are completed.
- 6) If the PC used for the update is not the PC where the previous software version has been installed, before proceeding you first need to install the software and drivers you can find in the CD supplied with the Bit One product (following the document "Driver_Software_Installation_Guide_ENG.pdf", available on <http://update.audison.eu>). Then you will have to uninstall the software following the procedure hereafter.

PC Software Update

1. Write down ALL the settings selected in the Bit One (Eqs, Delays, Filters, Output levels, Input configuration, Output configuration) or save them selecting "Save Setup" from the "File" menu. By saving the settings of your Bit One through the "Save Setup" function you can view the settings in Offline mode: this software version does not allow you to automatically resume the settings you previously set.
2. Uninstall the old version of the Bit One software: click "Start", "Control Panel", "Add or Remove Programs". Browse the listed installed programs and look for "bit one", select it and then click on "Remove".

REMARK: In order to install the program on Windows 2000 / XP / Vista operating systems, the user profile must have Local Administrator privileges. If the user profile does not have these privileges, uninstalling the old software version and installing the new one will not be possible.



3. Create a new folder (named for example: bitone 1.5.0.0) on the Desktop or wherever you prefer.
4. Download the zipped folder "**Bit_One_Update_PCsoftware_V1-5_Firmware_V1-5-0-0.zip**" from <http://update.audison.eu> and save it in the folder you have just created.
5. Open the zipped folder "**Bit_One_Update_PCsoftware_V1-5_Firmware_V1-5-0-0.zip**" using the specific software (for example Winzip or "Compressed folders" Windows utility if available in your PC), and save the files you can find inside the zipped folder ("**bit one.msi**", "**setup.exe**" and "**bitone.1.5.0.0.bin**").
6. Install the new Bit One software version by double-clicking the "**setup.exe**" file. Please follow the Install Wizard: it is exactly the same procedure as the one used to install the older version.

Firmware Update

REMARK: The firmware update procedure requires particular attention. So, it must be performed under the best possible conditions: if the firmware update is launched but prematurely interrupted (for example because the PC locks up or the USB accidentally disconnects during the firmware update), you need to contact our Customer Service for further support as memory programming may be necessary.

Attention

The first action to be taken is to create a new folder (named for example: bitone 1.5.0.0) and save it on your desktop or wherever you prefer. Open the zipped folder “**Bit_One_Update_PCsoftware_V1-5_Firmware_V1-5-0-0.zip**” using the specific software (for example Winzip or “Compressed folders” Windows utility if available in your PC), and save the files you can find inside the zipped folder you have just created.

Recommended precautions:

- a. If the update is being performed using a laptop, you have to connect it to the PC through the mains supply and not through the laptop battery.
- b. Close any currently running program before launching the firmware update procedure.
- c. Disconnect all the audio inputs and all the audio outputs.
- d. Make sure that the Bit One is supplied in a continuous and stable way, at least during firmware update: check if the power supply and the remote in connections are correctly working, and if power is supplied in a continuous and stable way.
- e. Connect the Bit One to the PC using the USB cable supplied with the product.
- f. Turn on the Bit One by using one of the Remote In contacts.
- g. Make sure you save the Bit One settings by either writing them down or saving them selecting “Save Setup” from the “File” menu.

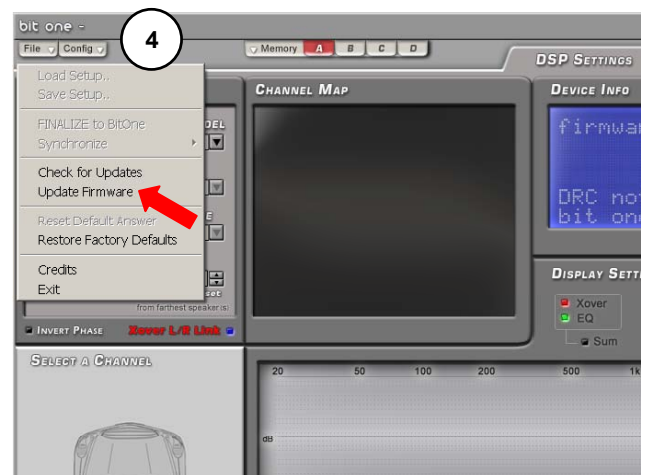
UPDATE:

1. After double-checking that the above instructions have been followed, connect the Bit One to the PC. Then turn the Bit One on.

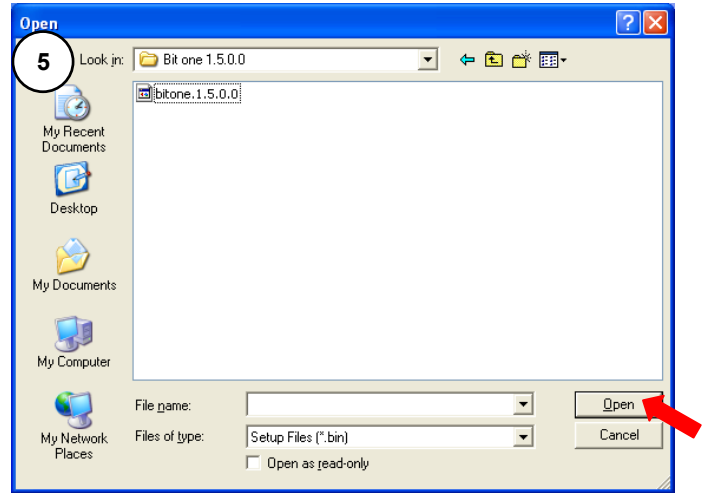
2. Launch the “Bit One V. 1.5” PC software.
3. Select “Rescue Mode” and double click on the Bit One image.



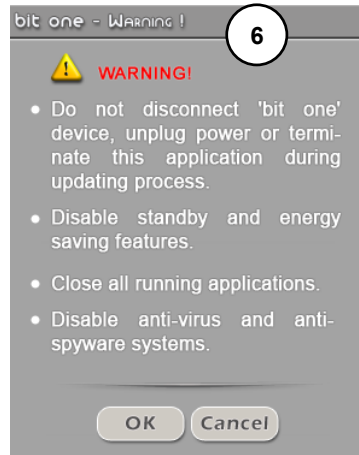
4. Select “Update Firmware” from the “File” drop-down menu.



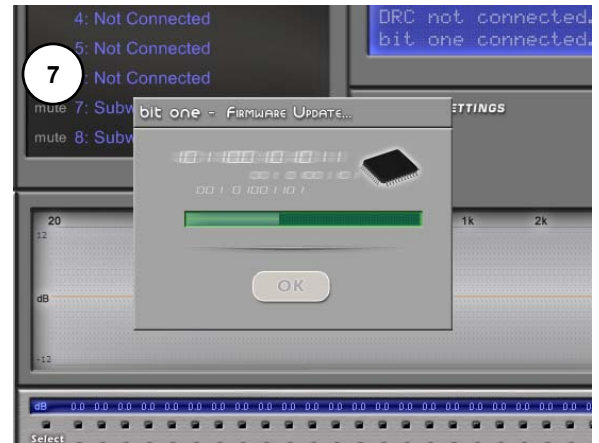
5. Select the file previously saved during the download process, and click on “Open”.



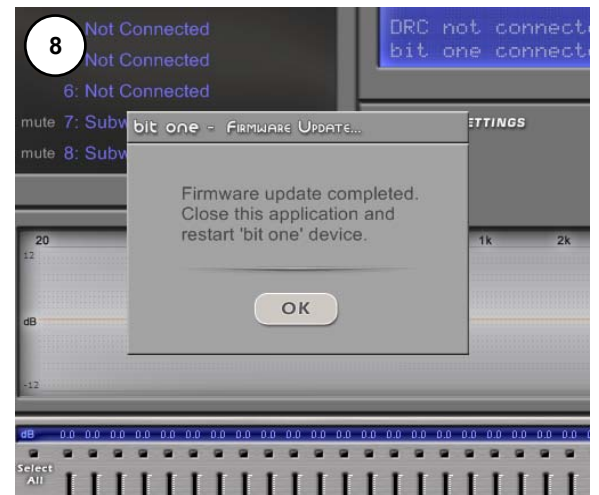
6. A warning popup dialog box will appear. Click on “OK”.



7. Now the new firmware will start being transferred to the Bit One: **this is the only delicate phase of the procedure**. A green bar will show the update progress. When the update process is almost at the end, while the Flash memory is actually being written, **the green progressing bar will stop** for two to five minutes: **this is normal, do not turn the Bit One off and do not exit the program**.



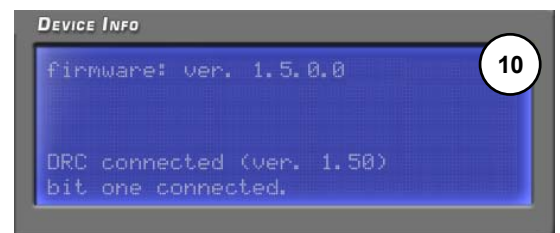
8. A popup dialog box showing the message “**Firmware update completed**” will confirm that the firmware update procedure has been successfully completed: click on “OK”.



9. Exit the Bit One Management Software and cycle power to the Bit One.

10. Launch the Bit One Management Software V.1.5. If the Bit One Firmware update has been successfully completed, the top right side of the window will display the following information:
- the new Bit One Firmware version (V. 1.5.0.0).
- the DRC Firmware version.

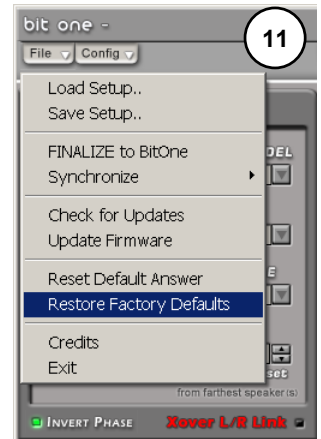
REMARK: If the DRC Firmware version is not displayed or it is older than V. 1.50, we recommend that you perform the DRC Firmware update.



11. Now you have to reset all the Bit One settings, because its Flash memory map is not compliant with the new firmware. Select **“Restore Factory Defaults”** from the **“File”** drop-down menu.

12. A warning popup dialog box will now appear asking you to confirm the reset process, click on **“YES”**.

13. Exit from Bit One PC software, by clicking on **“CANCEL”**. Then turn the Bit One off.



14. Turn on the Bit One. The update procedure is now completed. If you need to setup the Bit One, restart Bit One PC Software V 1.5, click on **“Next”** and perform the **“I/O configuration wizard”** as usual.

15. If necessary, reload the settings of filters, delays and EQs that you previously wrote down, or open in Offline mode the Setup you previously saved in your PC. Attention: the Setup you previously saved in your PC is not compatible with the new firmware version you just loaded.

16. Store the new settings into the non-volatile memory of the Bit One by selecting **“Finalize”** from the **“File”** drop-down menu.

IMPORTANT: If the Firmware V. 1.5.0.0 is installed in your Bit One, you **MUST** use Management Software V 1.5 for your Bit One.